



Curves and Surfaces

Galerie
Hioco x

Delville **Oriental Art**

Founded in 2003 by Christophe Hioco, the **Galerie Hioco** specializes in ancient Asian art. Today, the gallery is partnering with **Didier Delville**, curator, for an exhibition presenting a perspective on a different genre: **contemporary Japanese ceramics**. This association is born of a common desire to highlight the work of these Japanese artists, some of whom are exhibited for the first time in France.

The Galerie Hioco is honored to host, from **June 9 to 16, 2022**, an exhibition dedicated to contemporary Japanese ceramics. Curated by Didier Delville, *Curves and surfaces: a perspective on Japanese contemporary ceramics*, is an ode to the art of Japanese ceramics.

Curve and Surfaces

Objects of refinement and decoration, **Japanese ceramics** experienced a new boom in the 1920s, when Soetsu Yanagi, a Japanese thinker and collector, theorized the *mingei*, thus giving a new impulse to crafts and so-called popular arts. In 1936, he opened a Museum of Folk Art, where ceramics were widely represented. This re-evaluation of the place of ceramics is successful: the works of the artists presented in Curves and Surfaces now find their place in the most important museum collections.

Curves, in homage to the power of the shape, which embraces space, harmonious, violent, playful.

Surfaces, a tribute to the plurality of materials, whose rigor is sometimes revealed, sometimes sharpened to the most extreme refinement.



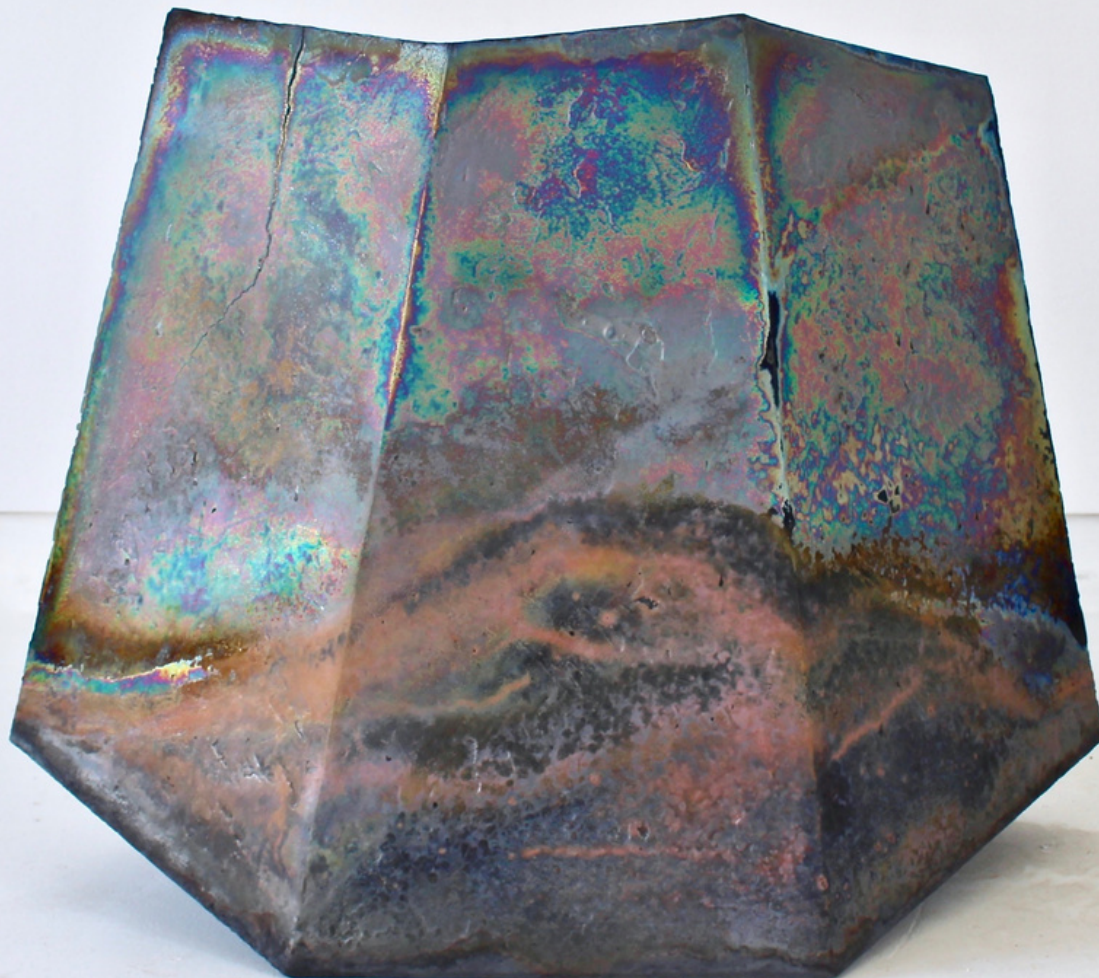


© Satoshi Kino
Evening Tide
Glazed porcelain
2021

These artists also demonstrate the richness of Japanese ceramics today: inheriting an ancestral tradition, it is now blossoming out of the traditional utilitarian rigor to propose a new genre, proteiform and shifting.

The light penetrates the void and the full, revealing the aesthetic plurality of the works, revealing the artistic individualities.

Ken Mihara, Tanoue Shinya, Minegishi Seiko, Sakai Hirochi, Shunichi Yabe, Takiguchi Kazuo, Chisato Yasui, Jun Matsumura, Hashimoto Tomonari, Hori Ichiro, Kaneta Masanao, and Yui Tsujimara present here their own perspective on contemporary Japanese ceramics.



Practical informations

Adress

7 rue de Phalsbourg, 75017, Paris

Please call +33 1 53 30 09 65 to access the exhibition

Date

From June 10th to 16th 2022

Contact

☎ 01 53 30 09 65

✉ info@infogaleriehioco.com

🌐 galeriehioco.com

© Hashimoto Tomonajun
Mat Stoneware, saturated glaze, oxide metal multifired
2020