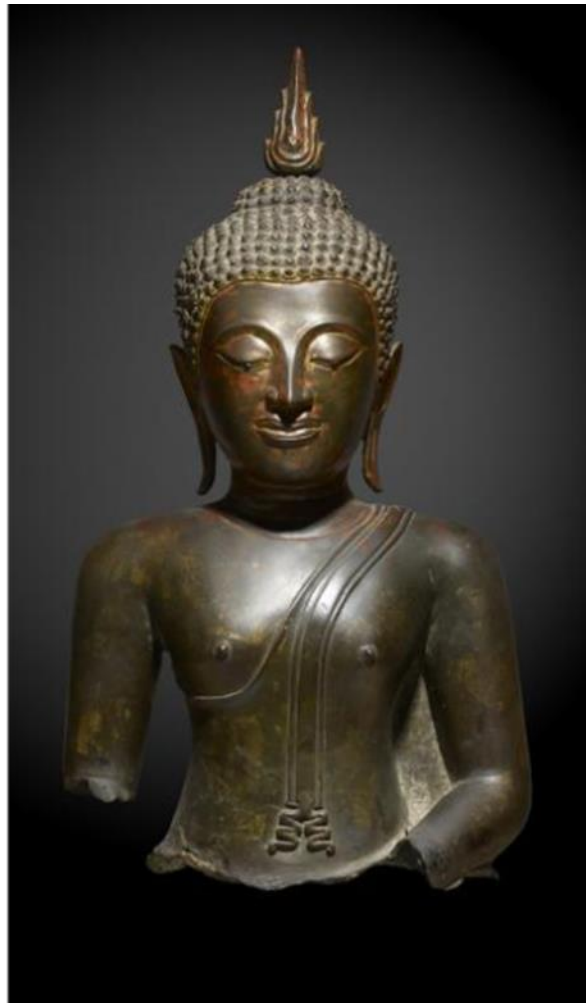


# Galerie Hioco

## Torso of Buddha (P498)



### What do we like in this sculpture?

- Its sublime bronze patina
- The delicate incised features
- Its remarkable degree of conservation



## I. Detailed description

### **Bust of Buddha (P498)**

*Copper alloy*

*Thailand*

*15<sup>th</sup> century, U-Thong style*

*H. 24 in*

### **A breath-taking bronze figure**

This majestic bust of Buddha from Thailand, dignified and of significant size, is a rare U-Thong image from the 15th century. In this Buddha measuring more than 60 cm high, it is with great subtlety that the Indian-influenced Dvāravatī style, the Lop'burī Khmer style and the characteristic Thai style of the Sukhothai Kingdom are interwoven. Indeed the shape of the face, powerful and inscribing itself in a square, perpetuates the "Khmerizing" art. The fine facial lines with the aquiline nose and the very graphic arched eyebrows, refer to the classic style of Sukhothai. The uṣṇīṣa here surmounted by a flame-shaped rasmi is removable and still comes from the kingdom of Sukhothai. The proportions of the torso tend towards more softness and elegance.

### **An art at the crossroads of various styles**

The incredible patina of the bronze and important remains of red lacquer and gilding are still visible. In addition, the incrustations made of mother-of-pearl are preserved in the eyes and strengthen the expression of majesty emanating from this Buddha.

### **A fundamental iconography**

This piece whose iconography is fundamental in Buddhist art, represented the Awakened One sitting in virāsana and calling the Earth to witness his Enlightenment (bhūmisparśa mudrā).



II. Image of the piece – front view



III. Image of the piece – left three-quarter view



IV. Image of the piece – back view





V. Image of the piece – right three-quarter view

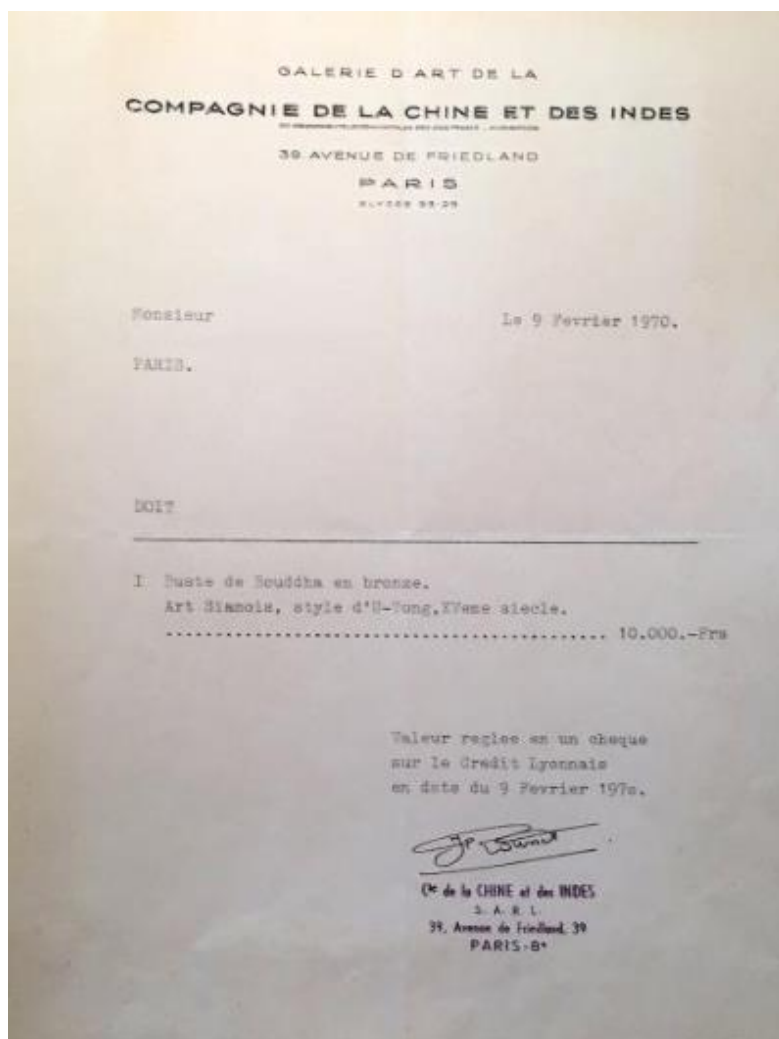


## VI. Provenance: in all transparency!

. It was acquired from the Compagnie de la Chine et des Indes in Paris on 9 February 1970 and a reproduction of the original invoice can be seen below.

. We are always very cautious and diligent about the provenance of the artworks we offer. Ensuring the seriousness and reliability of the information given by the former owners is one of our priorities and we then guarantee this origin by engaging our responsibility.

. In order to reinforce this guarantee, we systematically verify that these artworks have not been registered as missing or stolen. As Interpol has granted us the right to directly consult their database of stolen or reported items, we verify by ourselves and issue a certificate attesting to this.



## VII. Condition report: our scientific approach

This bronze statue from the U-Thong period, although fragmentary, is indicative of Thai production during this period. The bronze has a very strongly oxidised appearance, which is characteristic of a work that would have been used in a cult context. Indeed, the believers coated the statues with paint, ointments and other substances during rituals. Traces of red and gold polychromy and residues of gold leaves applied over the centuries also illustrate Buddhist devotional practices. The break at the hips reveals a clay core, characteristic of the lost-wax casting technique. The right forearm is missing, and a pinhole can be seen at this point, which must have been used to hold a restored element. Similarly, the pin still can be seen regarding the left wrist: an element that testifies the former restorations. Thus, the restored elements were removed afterwards. Some areas have received secondary casting, especially on the monastic vestment. A crack is visible on the back of the Buddha's left shoulder, which has been filled with a repair piece to prevent the crack from spreading. The eyes are set with mother-of-pearl inlays. The lacks, as well as the addition of polychromy and elements over the centuries, are quite logical for a work from this period.

*Please note that since we are not conservators or restorers, it must be understood that any condition report we made is a subjective qualified opinion, even if we do our best efforts. Prospective buyers should inspect the piece to satisfy themselves as to condition.*





## IX. Comparable museum artwork – The Walters Art Museum

A fragmentary U-Thong statue of Buddha in bronze, exhibited at the Museo d'Arte Orientale in Turin:



< COLLEZIONI

### Busto del Buddha Shakyamuni (frammento)

Torso e testa di statua in bronzo con una fine patina naturale e con tracce di lacca e di doratura. La datazione al XV sec. è suggerita da considerazioni stilistiche e dalla qualità della fusione che riflette l'alta perizia tecnica raggiunta nel regno di Sukhothai. Caratteri stilistici tipici sono i riccioli finemente lavorati, la fiamma di altezza contenuta, i lobi degli orecchi rivolti all'esterno, l'orlo delle labbra delicatamente cesellato. A questi elementi si aggiungono la leggera veste monastica e la cintura suggerita dal bordo sottile, lo scialle che, scendendo dalla spalla sinistra, termina appena sopra l'ombelico con un elegante motivo disegnato dall'orlo delle pieghe. L'insieme di questi elementi eserciterà una notevole influenza sulla produzione artistica del periodo successivo.

## X. Our guarantees: for a serene acquisition!

- More photos will be sent to you on request.



- In case of purchase, we will establish an invoice that you can pay by bank transfer.
- You will receive our certificate of authenticity with the photo of the artwork, its detailed description and the mention of the provenance.
- We will define together the shipping modalities and we will take care of all customs formalities if you live outside of France.
- If you do not like the piece, we give you the possibility to return it to us and we will assist you with the resulting terms and conditions.

