

EUROPE

Brussels Antiques & Fine Arts Fair

The Brussels Antiques & Fine Arts Fair (BRAFA), now in its 55th year, takes place at the historic Tour & Taxis exhibition site in the heart of Brussels (22-31 January). About 15 of the 130 or so participants are Asian art dealers from Europe. All of the works displayed are rigorously vetted by an independent committee of museum curators and scientists.

Corinne Van der Kindere of **Artcade Gallery** will show Song period *qingbai* works, including a seated laughing Buddha and a pair of incised plates, as well as *temmoku* ware. Other highlights are a late Shang period *you* and a late Tang silver bowl with gilding, as well as a Tang period *sancai* and cobalt-blue-glazed attendant figure, and a pair of painted pottery female figures, each holding a mirror and with a puppy at her feet (H. 30.5 cm). Van der Kindere has recently moved location and now shares a gallery space with Patrick Lancz at 27, rue Ernest Allard,



Pair of figures
China, Tang period
(618-907)
Artcade Gallery

Brussels.

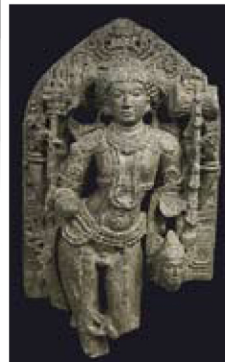
Georgia Chrischilles's display will include a 13th/14th century patinated copper vessel and a gold bracelet of the Majapahit kingdom, both from Java. She will also have a copper alloy image of Amoghasiddhi, one of the Five Wisdom Buddhas of the Vajrayana tradition, from Tibet, dating to the late 13th/14th century (H. 54.5 cm).



Amoghasiddhi
Tibet, late 13th/
14th century
Georgia Chrischilles
(Photography
by F. Dehaen/Studio
Asselberghs)

Christophe Hioco will exhibit Vietnamese Dong Son period bronzes, along with Indian Hindu and Buddhist sculptural works. A steatite image of Shiva Bhiksatana depicts the Hindu deity as a mendicant, standing in front of a stele decorated with a

kirtimukha and floral motifs (82 cm). Standing in *tribhanga*, the three-bend posture, the figure holds a trident and a *damaru* (drum) in his two upper hands; the two lower hands, now missing, probably held a sword and a begging bowl. Bearing the characteristics of the late Chalukya period, the work has been dated to the late 11th century.



Shiva Bhiksatana
India, Karnataka,
late 11th century
Galerie Christophe
Hioco

Tamio Ikeda of **Galerie Tanakaya** in Paris will be showing *ukiyo-e*, mainly by Utagawa Hiroshige, as well as *shin hanga* by Kawase Hasui and Ito Shinsui, such as a print from Ito's 'Second series of modern beauties' (43.5 x 28 cm). He will also be



'Gendai bijinshū dai-nishū – Fubuki'
(Snowstorm), no. 33 of an edition of 250
By Ito Shinsui (1898-1972), 1932
Galerie Tanakaya

featuring some Shibayama lacquer objects, including a 19th century *kodansu* signed 'Kougetsu', and 17th-20th century ceramics.

Eric Pouillot is delighted to be participating in BRAFA for the

fifth time. New pieces and highlights include a Northern Wei period earthenware horse with traces of polychrome pigment, its front right leg raised (H. 27 cm), and a kneeling dancer from an imperial tomb dating from the beginning of the Western Han period.



Horse
China, Northern Wei
period (386-534)
Eric Pouillot

UNITED STATES

San Francisco Arts of Pacific Asia Show and San Francisco Tribal & Textile Arts Show

Coinciding with 'Arte du Monde SF' (5-12 February), celebrating the Bay Area cultural arts scene, the 14th San Francisco Arts of Pacific Asia Show (APA) takes place at the Fort Mason Center on the waterfront (5-7 February). More than 10,000 works spanning two millennia will be on show. The opening night preview on 4 February will benefit the Asian Art Museum's Chong-Moon Lee Center for Asian Art and Culture. Clare Graham and Bob Bream, interior designers for the Caskey-Lees shows, will set up a display of Batak textiles for sale, also featuring Sandra Niessen's *Legacy in Cloth: Batak Textiles of Indonesia* (Leiden, 2009). Several exhibitors from the APA will also participate in the **San Francisco Tribal & Textile Arts Show** (TTAS) at the same venue on 12-14 February. The preview, benefiting the de Young Museum, takes place on 11 February.

The exhibition '**Heart of the Brush**', at the APA, from 4 to 7 February will showcase ink-on-paper works by **Vichai Chinalai**. Inspired by Chinese calligraphy, his paintings also reflect his Thai Buddhist background and his interest in Asian art and philosophy.

Vichai and Lee Chinalai's new venture **Chinalai Modern**, representing contemporary weaving and jewellery artists from Thailand and the surrounding regions, will be at the APA, with hand-woven, naturally dyed and hand-stitched scarves and shawls; hand-stitched and embroidered clothing and bags in traditional materials; and sterling silver jewellery hand-forged by Yao hilltribe silversmiths, including a necklace of hollow silver beads designed by Thai artist Wandee (L. approx. 55 cm).



Hollow silver bead necklace
Designed by Wandee
Chinalai Modern